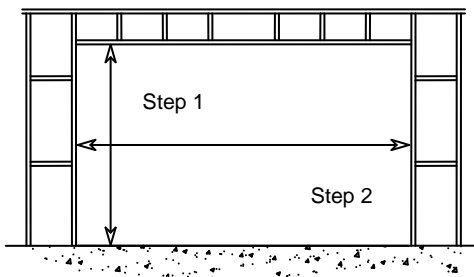


Entertainer & Bi-Parting Sliding Door Installation

PLEASE NOTE: Installation of A&L Entertaining and Bi-Parting Sliding Doors as per these instructions is vital for smooth operation for the life of the product. Incorrect installation can severely affect product performance.



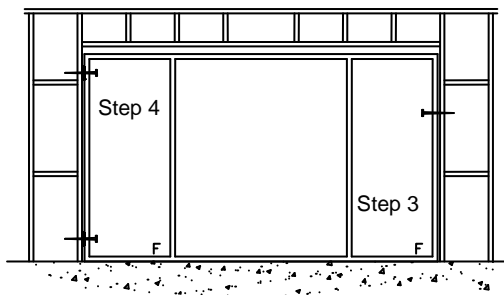
Step 1

Measure the frame opening to ensure that there is sufficient room for the product and additional packing. Stud opening:

Height = O/A reveal size + 30mm
Width = O/A reveal size + 20mm

Step 2

It is important that the door sill has a level platform to sit on. Ensure the sill is packed flat and level. This will prevent twist and movement when the door is being operated.



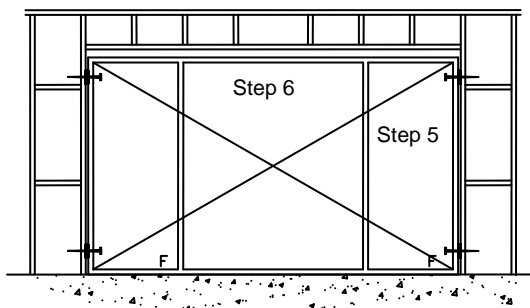
Step 3

Present the door frame to the opening and stand up into place. Temporarily tack the top corner of one jamb reveal into place to hold frame.

Note: The jambs are to be packed and fixed 150mm from the top and bottom and in the middle of both jamb reveals. The fixing hole must be pre-drilled through the reveal and packer to prevent cracking or splitting of the reveal material.

Step 4

Ensure the opposite jamb is plumb and level. Temporarily fix the top and bottom of the reveal into the frame.

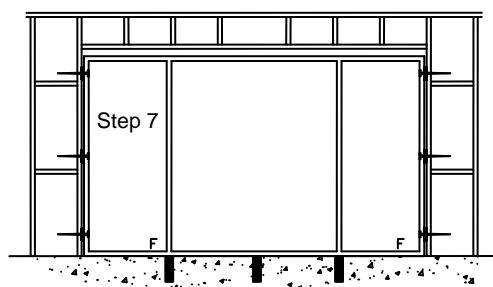


Step 5

Repeat the process for the jamb temporarily tacked in, ensuring it is plumb and level.

Step 6

Before fixing in the centre of both jambs and nailing it home, check the diagonal dimensions of the aluminium frame. A tolerance of 3mm is acceptable. If they are more than 4mm, re-check the jambs for plumb and adjust packing as required.

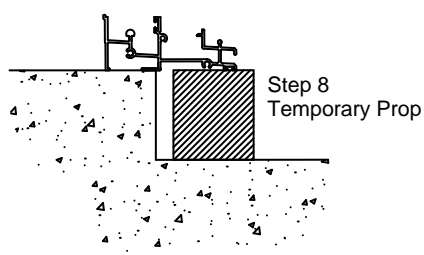


Step 7

Nail home top and bottom and fix in the centre of both jambs.

Step 8

The sliding doors are only supported on the back edge of the sill (until the sill bricks go in). We suggest to prop the sill in 3 points as there is a chance that when walked on during construction, that the sill can roll forward. The props are to be removed when the sill bricks are laid.



Step 9

Install sliding panels as per the other instruction found on this product.

By following this installation guide, you will ensure proper operation of fly doors and barrier doors when fitted. A&L may be unable to provide a warranty on this product if it is deemed that it has not been installed as per these instructions. Please contact A&L Windows if you require further assistance.